



NORTH CARIBOU CAMPS HOW TO REACH US

Driving

**To Pickle Lake: From the Pigeon River border – Thunder Bay, ON
Take Hwy. 61 North to Hwy. 11/17 West
Hwy. 17 at Shabaqua Corners to Ignace, ON
Hwy. 599 North at Ignace to Pickle Lake**

**From the International Falls border – Fort Frances
Take Hwy. 11 East to Hwy. 502 North to Dryden
From Dryden take Hwy. 17 to Dinorwic
Hwy. 72 North to Sioux Lookout
Hwy. 516 East to Hwy. 599 to Pickle Lake**

**To Armstrong: From the Pigeon River border – Thunder Bay, ON
Take Hwy. 61 North to Hwy. 11/17 East
Hwy. 11/17 East to Hwy. 527 North to Armstrong**

Flying

Please contact us if you should need information on commercial flights from your area to an airport in Thunder Bay, ON or Winnipeg, MB.

Hotel Information

Pickle Lake - The Winston: 807-928-2390

**Sioux Lookout - Best Western: 807-737-4444
Forest Inn: 807-737-1330**

Armstrong - McKenzie Lake Inn: 807-583-2800

Chateau North Motel: 807-583-2000

Dryden - Holiday Inn Express: 807-223-3000

Timberland Motel: 807-223-5395

Best Western: 807-223-3201

Patricia Inn: 807-223-3291

Ignace - Northwoods Motor Inn: 807-934-2296

Trading Post Motel: 807-934-2386



NORTH CARIBOU CAMPS

BORDER CROSSING INFORMATION

<http://canadainternational.gc.ca>

<http://canadawelcomesyou.net/>

It is very important that all visitors to Canada check out the rules and regulations for crossing the border before leaving home.

The above web sites have general information such as what you can legally bring across for tobacco, liquor and food items, etc.

Bringing Firearms into Canada – ALL fully automatic weapons, handguns and pepper spray are prohibited in Canada. You must obtain a gun permit for your guns. Refer to www.cfc-cafc.gc.ca . You may bring a hunting rifle or shotgun into Ontario for hunting purposes. Firearms must be Registered for a fee of \$25. For more information contact 1-800-731-4000 or (705)329-7662.

Criminal Inadmissibility (D.U.I.'s, B & E 's, etc.) Information and application forms available at www.cic.gc.ca or a specific link at www.cic.gc.ca/english/applications/rehabil.html A Temporary Resident Permit (TRP) can usually be issued by applying ahead to overcome any past indiscretions by a party member.

Contact Lucy Perillo, (800) 438-7020, <http://BORDERCROSSING.CA> for estimate on processing your paperwork.

You are required to have Proof of Citizenship. A passport is the best and will be necessary in 2007 however, a birth certificate or baptismal certificate will work for this year. One form of I.D. should include your photo. If you have a minor traveling with you that is not your own you need a letter of authority from their parent or guardian.

Remember - Always be polite and answer questions truthfully.



NORTH CARIBOU CAMPS ARRIVAL & DEPARTURE

- We will try to give you an estimate on the time of departure to the outpost before your trip.
- Try to arrive in Pickle Lake or Armstrong, as previously discussed, the night before departure.
- If you have a delay on route please advise us so we can reschedule.
- Remember, your flight is back to back with other guests waiting to come out on the same trip.
- On the day you are scheduled to leave the outpost please have all your gear packed and piled by the dock. Also, remember to clean the cabin and grounds well in advance of the other groups' arrival.
- **PATIENCE IS A MUST! Mother Nature plays a very large role in the fly-in business.**



WEATHER

When you visit the far north, such as the Pickle Lake area, you come to realize that the weather can be somewhat unpredictable. It can be very, very hot in the summer and of course very, very cold in the winter. However, from June through August the average temperatures range in the 70's. September can bring fair weather during the day but the nights tend to cool off significantly.

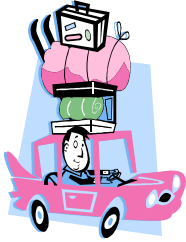
Our best advice to you is to be prepared. Layers are very important! When you go out in the morning it will be on the cool side but it can warm nicely during the day. Raingear and boots are a must as well as sunscreen and a hat.

Check out these web sites for more on what to expect:

www.ghcc.msfc.nasa.gov/GOES/

www.weather.ec.gc.ca/forecast

NORTH CARIBOU CAMPS



PACKING FOR THE TRIP

All of your gear and provisions are weighed. North Caribou Camps has a weight limit of 100 lbs. per person. All extra baggage weight will be charged at a rate of \$1.00 per lb.

Each member of your group should use medium size duffel bags rather than super large ones for easy loading. Everyone will need a sleeping bag and pillow along with your personal clothing and toiletries. Follow the list provided for the basics we feel you will need for your outpost vacation.

One medium sized cooler for every three people is more than enough as well as one fish locator for every two people. Don't forget extra (new) batteries.

Keep tackle to a minimum. We have enclosed a few suggestions to ensure you have an excellent fishing week. Also, rods should be in cases.

Please do not pack your gear or clothing in garbage bags. They can often get mistaken for trash by the pilot or camp hand.

When packing your food items here are a few tips that may help:

- **Rather than bringing full bags of flour, sugar, etc. only bring what you need.**
- **Prepackaged foods that come in boxes can be transferred to food storage bags that weigh a lot less.**
- **Use light cardboard boxes to pack your food items. Something that can be disposed of at the end of the week.**

You can use a bathroom scale to weigh your gear and groceries before you leave home. Please understand that many groups do have extra weight. These were just some suggestions to help you prepare in the best way possible.

***We will work with you!! If you want to fly in a few items ahead of time, on the previous check flight, just let us know and we can pick up your beer, soda or other grocery items and have them at the camp waiting for you.**



NORTH CARIBOU CAMPS THE MENU

PLAN YOUR MENU ONE MEAL AT A TIME

KEEP YOUR MEALS VERY SIMPLE TO AVOID EXTRA WEIGHT AND WASTE AT THE END OF YOUR TRIP.

The food plan below is set up for 4 people for 5 days. If your group is larger or smaller the plan will be adjusted accordingly.

If you would like us to do the shopping for you this is the plan we would use. If you choose to do it yourself this gives you a great guideline to follow.

Meat

4 New York Steaks
8 Pork Chops
3 lbs. Hamburger
8 Chicken Breasts
1 Pkg. Hot Dogs (12)
2 lbs. Sliced Sandwich Meat
3 lbs. Bacon
1 lb. Sausage

Produce

1 doz. Apples
1 doz. Oranges
3 lbs. Cooking Onions
10 lbs. Potatoes
Tossed Salad (2 Meals)

Dairy

2 doz. Eggs
1 lb. Butter
1 lb. Cheese
8 Jello Desserts

Beverages

2 lbs. Coffee
1 box Tea Bags
2 half gallons Orange Juice
2 half gallons Milk (2%)

Misc.

4 Rolls Paper Towel, 4 Rolls Toilet Paper, Dish Soap, Hand Soap, Garbage Bags, Dish Cloth & Towels, Wooden Matches

Dry Goods

1 Pkg. Pancake Mix
1 Bottle Pancake Syrup
1 box Raisin Bran
1 jar Coffeemate
1 Bottle Mustard
1 Bottle Ketchup
1 jar Mayonnaise
1 jar Pickles
1 jar Peanut Butter
1 jar Jam
4 loaves Bread
1 pkg. Hot Dog Buns (12)
1 pkg. Hamburger Buns (12)
2 pkgs. Kraft Macaroni & Cheese
1 pkg. Spaghetti Noodles
1 jar Spaghetti Sauce
2 pkgs. Fish Seasoning
5 cans of Vegetables (mixed)
2 cans of Beans
2 cans of Mushrooms
1 lb. Sugar
1 bottle Salad Dressing
2 gals. Cooking Oil
4 pkgs. Soup Mix
1 box Crackers
Popcorn, Nuts, Chips, Cookies
Salt, Pepper, Garlic Powder

NORTH CARIBOU CAMPS



CLEAN UP LET'S MAKE IT PICTURE PERFECT

Let's talk trash!!

- Burn all paper in the cabin wood heater or crush into garbage bags.
 - Cut both ends out of cans and flatten.
 - Never pour grease or cooking oil down the drain. Use a coffee can.
 - Put all pop and beer cans separate. Must be crushed.
 - Pilots do not like leaky bags. Double bag if necessary.
- *Remember the garbage flies out with you.

Fish Cleaning!!

- It is a must to keep a CLEAN fish house on a daily basis.
- Fish remains are to be taken across the lake and disposed of on shore for the gulls.
- DO NOT dump fish remains into the lake. It is the law.

Boats & Motors!!

- Please clean the boat out for the next guests.
 - Any damage to the equipment is your responsibility.
- *TIP – Following in single file on route to and from your fishing locations will reduce the chances of rock or reef damage to the motors.

The Cabin!!

- If you keep the cabin and grounds tidy throughout your stay there will be less to do on departure day.
 - Please do up the dishes, clean the refrigerator and range, wipe down the shower, pack up all the garbage, and on your way out the door sweep and mop the floors.
- *Please DO NOT leave food items in the refrigerator. If you want to take it home do so or toss it in the garbage. The fridges are small and the new group needs all the room available.



A CAMERA IS A MUST!

**NORTH CARIBOU CAMPS
FISHING LICENCE LIMITS
CONSERVATION LICENCES ONLY**

**North Caribou Camps are located in Division's 24 & 31.
The following are the legal Possession and Size Limits:**

WALLEYE

Conservation Licence - two (2) in one day
only one (1) greater than 18.1 in.
*Our policy is to release all fish over 18.1 in.

NORTHERN

Conservation Licence - two (2) in one day
none between 27.5-35.4 in.
only one (1) greater than 35.4 in.
*Our policy is to release all fish over 27.5 in.

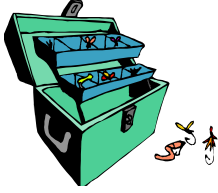
BROOK TROUT

Conservation Licence - two (2) in one day
*Our policy is Catch & Release unless
pan size for meal.

LAKE TROUT

Conservation Licence - one (1) in one day
*Our policy is small fish for a meal.

***Note:** *North Caribou Camps' policy is to throw all the large (trophy) fish back after taking a picture. The small fish taste much better and this will help keep the lakes producing excellent fishing for years to come. We prefer that no fish are taken home. Enjoy them fresh from the lake during your stay.*



NORTH CARIBOU CAMPS

TACKLE SUGGESTIONS

Northern Pike Lures

Medium to Large:

- Spoons** - Johnson Silver Minnow, Northland's Forage Spoon, Dardevle, Doctor, Little Cleo
- Spinners** - Mepps Musky Killer, Buzz Baits (White Tail)
- Crank Baits** - Rapala (Shad Rap Series), Husky Jerk
- Rattle Baits** - Rattle Trap, Rattlin' Rap, etc.
- Jerk Baits** - Suick, Musky Baits in General
- Top Water** - Zara Spook, Poes Giant Jackpot & Awaker
- Flies** - Large Streamers

Colors:

Gold, Silver, Hot Orange, Yellow & Red Mixes

Walleye Lures

Light to Medium Rods with Matched Reels

Small to Medium:

- Jigs** - 1/8 to 3/8's tipped with Berkley Power Baits and the new 'Gulp' **Double Tailed Twisters (1st Choice **White**, 2nd Choice **Yellow**)
- Spinners** - Mepps, Panther Martin, Rooster Tail, etc. with Squirrel Tail, Marabou, Feathers or Imitation Minnow Trailers
- Crank Baits** - Shad Rap Series, Tail Dancer, Hot-n-Tot
- Rattle Baits** - Rattle Trap, Rattlin' Rap, etc.
- Spoons** - Northland's Forage Spoon, Little Cleo, etc.
(Jerk/dropback retrieve, not unlike jigging, works best at times to trigger strikes)
- Flies** - Streamers and Other Wet Fly Presentations, including Nymph (Dr. Juice helps) in tight school situations around creek and river mouths or in shallow bays with a mayfly hatch in progress.

TROUTFLY LAKE

Lake Trout Shiny Silver & Gold Spoons, Spinners and Crank Baits, Hot-n-Tot

Brook Trout Small Mepps Spinners, Dardevle type Spoons and Fly Imitations

Walleye & Northern The key is to run crankbaits, etc. along drop offs at various depths, 12' – 25' with 14' – 17' depths being most effective.



NORTH CARIBOU CAMPS

ROB'S TIP ON HANDLING FISH

ALL TROPHY FISH ARE RELEASED – NO EXCEPTIONS

Respect must be given to all aspects of this Pristine Wilderness Experience.

A trophy Northern, 40" – 50" in length, has survived the harsh and hazardous Arctic Watershed environment for 15 to 25 years. It is a privilege to be allowed to encounter and battle these dinosaurs of the north. Therefore, I urge you to handle these fish as follows:

1. Bend your barbs down or replace with barbless. Also, replace treble with single hooks. You will rarely lose a fish if you maintain steady pressure with the rod tip up. No surgical skills are needed to remove hooks from an already stressed out fish (or in some cases the fisherman).
2. If you desire a picture or measurements prepare before the fish is removed from the water. If the fish is netted keep it and the net in the water until you are ready. Then quickly slide your fingers carefully up under the gill plate (not in the gills). Pinch firmly between thumb and fingers and lift head while supporting body of the fish with your free hand. Quickly take a picture or two and measurements of the length and girth if you plan on having a replica made. We are talking 10 to 15 seconds tops and then gently return it to the water and hold it upright until its strength returns. NEVER, NEVER weigh the fish. This is harsh and unnecessary torture. The only exception is with a cradle where both the fish and cradle can be weighed so as not to damage the fish. (We do not supply cradles)

Whatever type of fish you catch this type of respect needs to be shown.

Using patience and understanding I am sure this will be the best wilderness vacation you have ever experienced.

Rob



NORTH CARIBOU CAMPS

ADDITIONAL RELEASE THOUGHTS

BIG NORTHERN PIKE require medium to heavy action rods and reels. Long exhausting fights, which accompany light tackle, have a very detrimental effect on these precious trophies. Even though they may swim away after a careful release many will die from the extended fatigue of a long fight.

In other words, *horse them in a bit* and release them while they still have some fight left. Try to release the majority in the water without touching the fish at all. This can be done by giving slack line. Fish can usually throw pinched barb hooks or reach down with a 'Hook out Tool' and grab the hook and lure.

Even a measurement can be taken in the water by floating a paddle marked off in 35, 40, 45 and 50 inch increments. Estimate in between.

FISHING TECHNIQUES

Casting will always be my favorite method of fishing when fish location is known, however, trolling is a structure fisherman's way of finding that location.

A line counter reel spooled with the new no-stretch line on a medium weight glass rod (absorbs bottom snags and powerful fish strikes without damaging your tackle) can be a real asset.

Shad Rap Series, including Rizzo Rap, allows depth control. However, my choice is Buck Perry's Spoon Plug Series. They are unquestionably the best trolling lure for big northern ever. Both speed and depth control can be achieved with this lure.



North Caribou Camps

FINAL CHECK LIST

- **Border Crossing Information (See Custom Info. Page)**
- **Life Jackets**
- **Two Rods**
- **Tackle Box**
- **Landing Net**
- **Filet Knife & Sharpener**
- **Compass & GPS**
- **Portable Fish Locator**
- **Rain Gear**
- **Sleeping Bag/Pillow**
- **Towels (Bath & Dish)**
- **Camera & Film**
- **Sunglasses & Sunscreen**
- **Flashlight**
- **First Aid Kit**
- **Bug Repellent**
- **Food & Refreshments**
- **Garbage Bags (Heavy Duty)**
- **Toilet Paper**
- **Paper Towel**
- **Dish Soap**
- **Matches/Lighter**

Remember: 100 lbs. per person. Phone ahead with your beer, soda & water order for the check flight before your arrival.

NORTH CARIBOU CAMPS

**FISHING LICENCE AND DATA BASE INFO SHEET:
PLEASE FAX OR E-MAIL PRIOR TO YOUR VISIT.**

**WE NEED THE FOLLOWING INFORMATION FOR EACH MEMBER OF
YOUR PARTY.**

GROUP LEADER: _____

LAST NAME: _____

FIRST NAME: _____

INITIAL: _____

STREET ADDRESS: _____

CITY/TOWN: _____

STATE: _____

ZIP CODE: _____

TELEPHONE NO. _____

E-MAIL ADDRESS: _____

DATE OF BIRTH: year: _____ month: _____ day: _____

HEIGHT: _____

COLOR OF EYES: _____

LAST NAME: _____

FIRST NAME: _____

INITIAL: _____

STREET ADDRESS: _____

CITY/TOWN: _____

STATE: _____

ZIP CODE: _____

TELEPHONE NO: _____

E-MAIL ADDRESS: _____

DATE OF BIRTH: year: _____ month: _____ day: _____

HEIGHT: _____

COLOR OF EYES: _____